

\$415,000 - 907, 211 13 Avenue Se, Calgary

MLS® #A2219466

\$415,000

2 Bedroom, 2.00 Bathroom, 905 sqft

Residential on 0.00 Acres

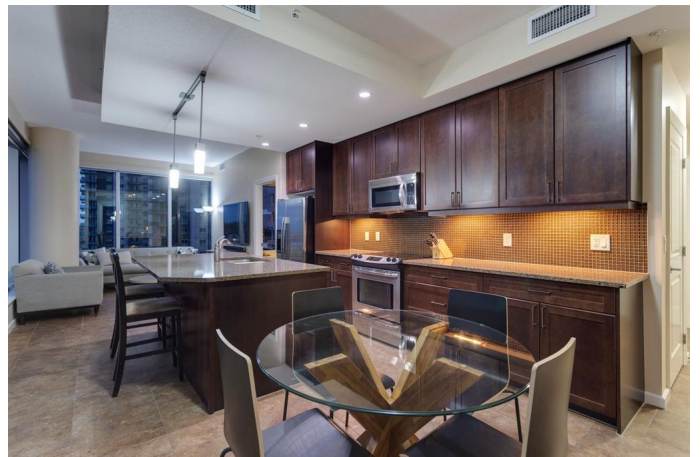
Beltline, Calgary, Alberta

Welcome to Nuera 1.0 a modern adult only high rise in the heart of the Beltline just steps away from restaurants, bars, entertainment & the downtown core. This 2 bedroom 2 bathroom unit is located on the 9th floor with expansive views of the surrounding area including the famous Stampede Park. This spacious unit offers an open floor plan that includes a dining space, kitchen, living room, two bedrooms, and two full bathrooms. The kitchen offers SS appliances, stone countertops, and ample cabinet space. The unit has floor to ceiling windows, a large balcony, in-suite laundry, and 9â€™™ ceilings. Also included with the unit is Titled heated underground parking with an end stall that is extra wide, and an additional storage space. The building also offers guest parking, bike storage, and a large fitness room. This unit has been well maintained and shows like new. Book your showing today!

Built in 2011

Essential Information

MLS® #	A2219466
Price	\$415,000
Bedrooms	2
Bathrooms	2.00
Full Baths	2
Square Footage	905
Acres	0.00



Year Built	2011
Type	Residential
Sub-Type	Apartment
Style	Single Level Unit
Status	Active

Community Information

Address	907, 211 13 Avenue Se
Subdivision	Beltline
City	Calgary
County	Calgary
Province	Alberta
Postal Code	T2G 1E1

Amenities

Amenities	Bicycle Storage, Fitness Center, Secured Parking, Storage, Visitor Parking
Parking Spaces	1
Parking	Heated Garage, Titled, Underground

Interior

Interior Features	Kitchen Island, No Smoking Home, Open Floorplan, Stone Counters, Storage, Walk-In Closet(s)
Appliances	Dishwasher, Electric Stove, Microwave, Refrigerator, Washer/Dryer
Heating	Forced Air
Cooling	Central Air
# of Stories	33

Exterior

Exterior Features	Balcony
Construction	Mixed
Foundation	Combination

Additional Information

Date Listed	May 8th, 2025
Days on Market	4
Zoning	DC

Listing Details

Listing Office	RE/MAX Realty Professionals
----------------	-----------------------------

Data is supplied by Pillar 9â„¢ MLS® System. Pillar 9â„¢ is the owner of the copyright in its MLS® System. Data is deemed reliable but is not guaranteed accurate by Pillar 9â„¢. The trademarks MLS®, Multiple Listing Service® and the associated logos are owned by The Canadian Real Estate Association (CREA) and identify the quality of services provided by real estate professionals who are members of CREA. Used under license.