

# \$719,900 - 1329 Prairie Springs Park Sw, Airdrie

MLS® #A2218825

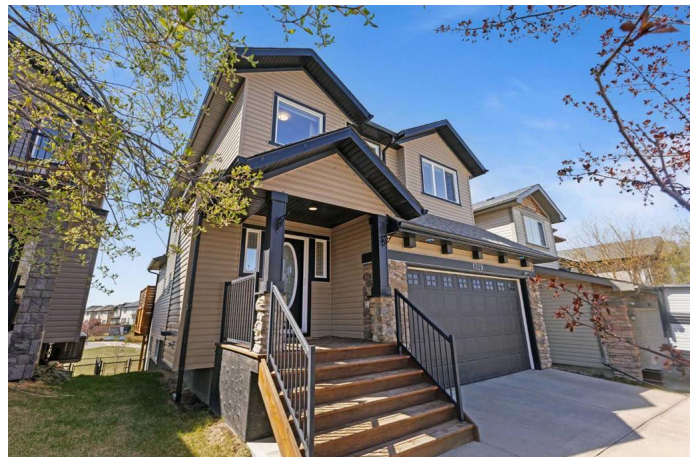
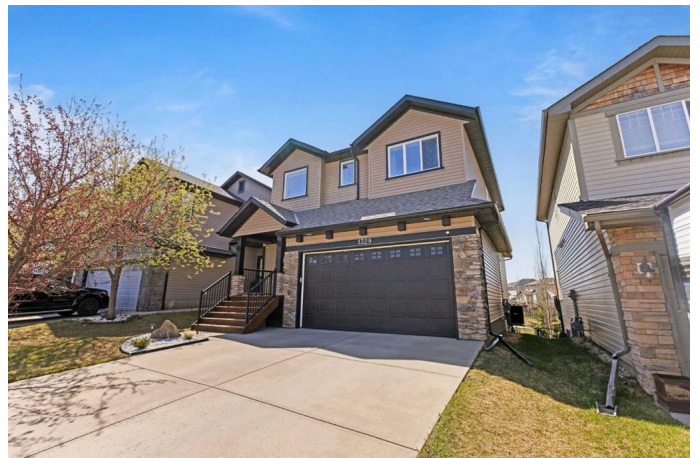
**\$719,900**

4 Bedroom, 4.00 Bathroom, 2,009 sqft

Residential on 0.09 Acres

Prairie Springs, Airdrie, Alberta

Located in the highly sought-after community of Prairie Springs, discover the perfect blend of elegance, comfort, and location at 1329 Prairie Springs Park—an exceptional walkout home designed to exceed expectations. Thoughtfully positioned with a south-facing backyard that backs onto a serene green space and playground, this residence offers both privacy and stunning natural views. Step inside to experience a sophisticated open-concept layout featuring a chef-inspired kitchen with granite countertops and a large island. The main living and dining areas are warm and inviting, anchored by a charming gas fireplace and ideal for both relaxing evenings and lively gatherings. A dedicated office on the main floor provides a quiet space for productivity with lots of natural light, while the expansive deck invites you to entertain or unwind while overlooking the lush landscape. The upper level hosts three generously sized bedrooms, including a spacious primary retreat with a spa-like ensuite and a walk-in closet. The fully developed lower level enhances the home's versatility with a fourth bedroom, full bathroom, and a sprawling recreation area—perfect for movie nights or extended family stays. Outdoor living is elevated by a private area prepped with a hot tub and direct access to the green space, effectively extending your backyard oasis. This home combines peaceful suburban charm with the convenience of nearby schools, shopping, and major transportation routes. Offering both



functional design and refined style, this property is a rare opportunity for families seeking a place to truly call home.

Built in 2007

### **Essential Information**

MLS® #	A2218825
Price	\$719,900
Bedrooms	4
Bathrooms	4.00
Full Baths	3
Half Baths	1
Square Footage	2,009
Acres	0.09
Year Built	2007
Type	Residential
Sub-Type	Detached
Style	2 Storey
Status	Active

### **Community Information**

Address	1329 Prairie Springs Park Sw
Subdivision	Prairie Springs
City	Airdrie
County	Airdrie
Province	Alberta
Postal Code	T4B 0E8

### **Amenities**

Parking Spaces	4
Parking	Double Garage Attached, Insulated
# of Garages	2

### **Interior**

Interior Features	Ceiling Fan(s), Closet Organizers, Double Vanity, High Ceilings, Jetted Tub, Kitchen Island, Laminate Counters, No Animal Home, No Smoking Home, Open Floorplan, Pantry, Recessed Lighting, See Remarks, Soaking Tub, Stone Counters, Storage, Vaulted Ceiling(s), Walk-In
-------------------	--

	Closet(s)
Appliances	Central Air Conditioner, Dishwasher, Garage Control(s), Gas Range, Microwave Hood Fan, Refrigerator, Washer/Dryer, Window Coverings
Heating	Forced Air, Natural Gas
Cooling	Central Air
Fireplace	Yes
# of Fireplaces	1
Fireplaces	Gas, Mantle, Stone, Zero Clearance
Has Basement	Yes
Basement	Finished, Full, Walk-Out

## Exterior

Exterior Features	BBQ gas line
Lot Description	Back Yard, Backs on to Park/Green Space, Few Trees, Front Yard, Landscaped, Level, Rectangular Lot, See Remarks
Roof	Asphalt Shingle
Construction	Stone, Vinyl Siding, Wood Frame
Foundation	Poured Concrete

## Additional Information

Date Listed	May 8th, 2025
Days on Market	58
Zoning	R1

## Listing Details

Listing Office	eXp Realty
----------------	------------

Data is supplied by Pillar 9â„¢ MLSÂ® System. Pillar 9â„¢ is the owner of the copyright in its MLSÂ® System. Data is deemed reliable but is not guaranteed accurate by Pillar 9â„¢. The trademarks MLSÂ®, Multiple Listing ServiceÂ® and the associated logos are owned by The Canadian Real Estate Association (CREA) and identify the quality of services provided by real estate professionals who are members of CREA. Used under license.